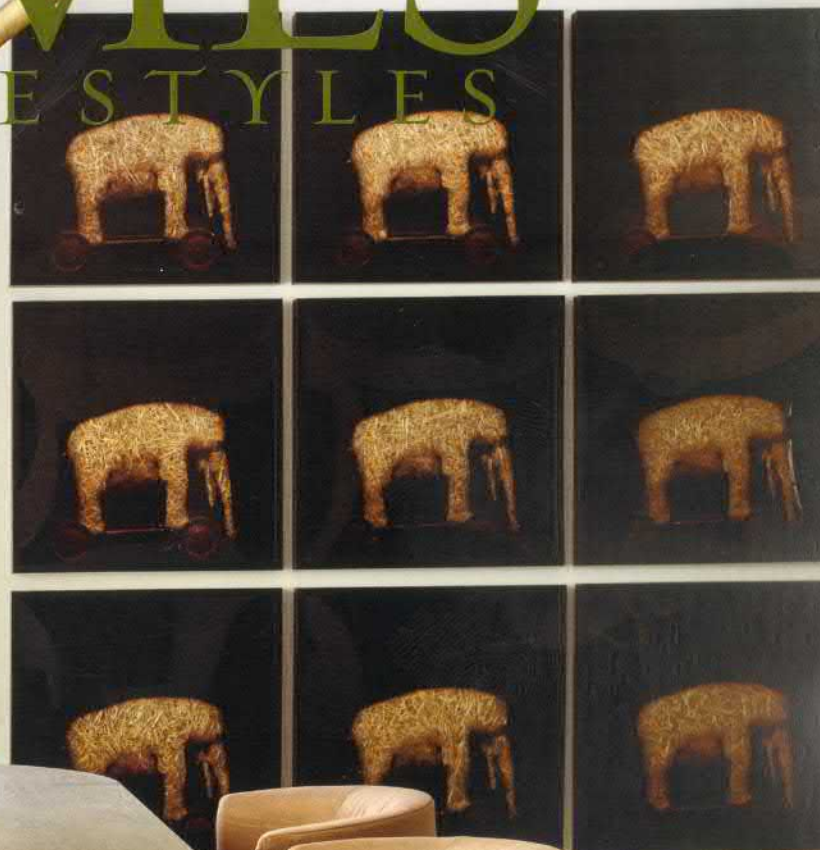


ATLANTA HOMES™ & LIFESTYLES

*EPIC
STYLE*

*CLASSIC,
COVETABLE
& FRESH
INTERIORS*



SEPTEMBER 2020
ATLANTAHOMESMAG.COM

\$5.95US

09>



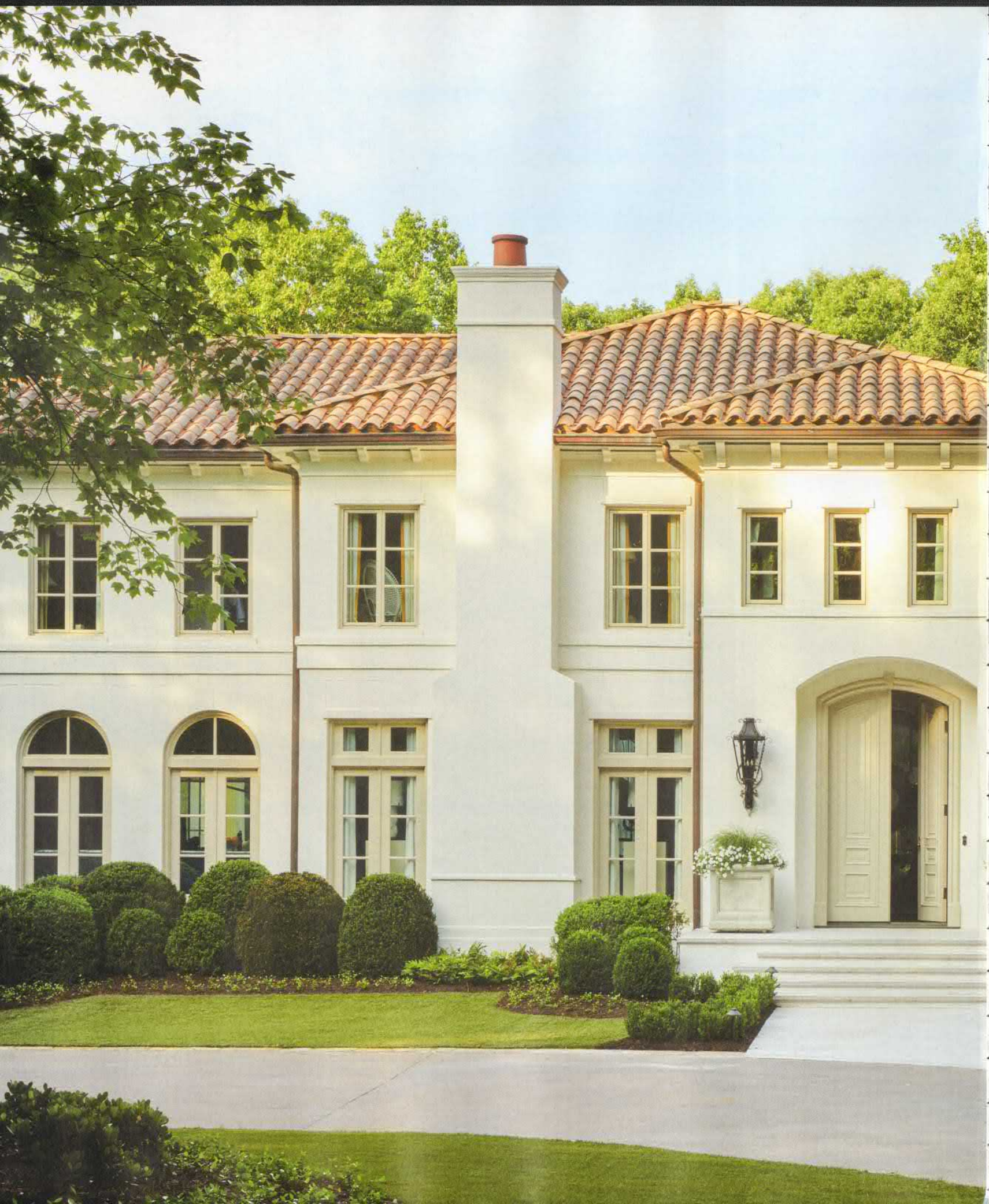
0 71486 03342 4

home

SEPT. 2020



PHOTO BY EMILY FOLLOMILLI. DESIGN BY ROBERT BROWN. INTERIOR SPECIFICATIONS BY SOURCE



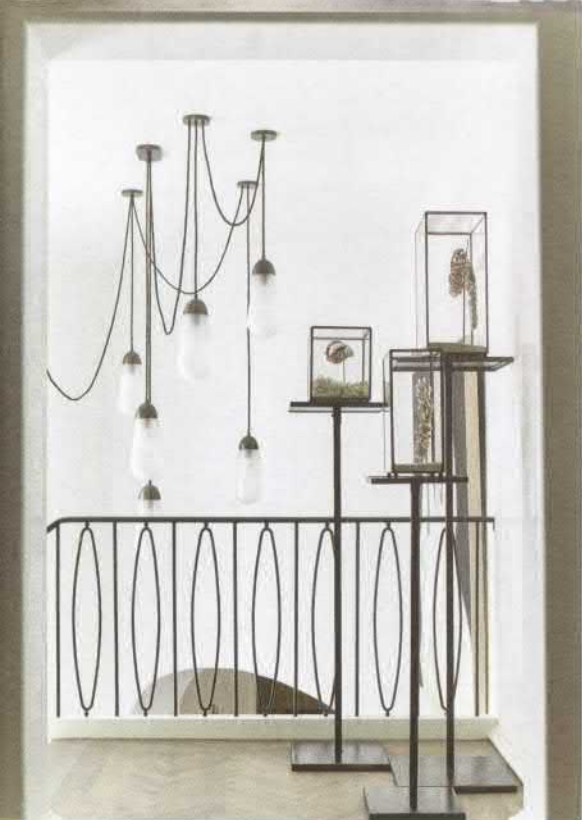
CALIFORNIA *COOL*

THE 2020 SOUTHEASTERN DESIGNER
SHOWHOUSE & GARDENS INFUSED CLASSIC
ATLANTA STYLE WITH WEST COAST VIBES

Principal Photography by
EMILY FOLLOWILL

Produced by
ZOE GOWEN

Benecki, Linda
MacArthur Architect,
Cole Construction and
Source led the charge to
reinvigorate this
Mediterranean-style
mansion. Originally
conceived by Harrison
Design in the 1990s
for local businessman
Charle Ackerman, a
limewashed exterior
and reconfigured in-
terior floor plan lent
this residence a fresh,
contemporary ease.



GREAT EXPECTATIONS

ROTUNDA AND STAIR HALL, MARK WILLIAMS AND NIKI PAPADOPOULOS, MARK WILLIAMS DESIGN

The grand rotunda and stair hall—marked by rounded Venetian plaster walls—evokes Hollywood glamour and sophistication. Who wouldn't want to descend this sweeping staircase in their Academy Awards-best to greet their guests? "We would love to think that this is a house for a woman who knows her mind, supports other women and celebrates their successes," says Papadopoulos. Playing to the curved walls and graphic but graceful stair, Williams says the feminine, sensual space was the catalyst for the artwork they chose. In the rotunda, the designers opted for a large cast-stone sculpture placed at the center of a brass inlaid floor design. "We didn't want to dismiss the space as simply a pass through," says Williams. "With this one piece we were able to create a powerful impression, without it becoming a distraction from the rest of the beautifully designed spaces." A photograph by Fabiola Jean-Louis beckons guests to the seating area tucked under the floating staircase. "We wanted something powerful at the end of the sight line to draw you in from the rotunda, and the model's riveting gaze certainly does that." —Cathy McGowin



ZELIGE TERRA COTTA
TILE IN FOYER and WOOD
FLOORING WITH BRASS
INLAY Source DRAPERY
Holly Hunt, fabricated by
The Drapery Room ART
Fabiola Jean-Louis through
Alan Avery Art Company;
Sheyda Mehrara SETTEE
and OTTOMAN Kelly
Wearstler through Show-
room 58 NESTING TABLES
J Liston Design through
R Hughes SCULPTURE
Phillips Collection CHAN-
DELIER Apparatus through
R Hughes RUG The Rug
Company SCULPTURE
AT TOP OF STAIRS Blake
Dowling Weeks



FINDING THE LIGHT

LIVING ROOM,

AMY MORRIS, AMY MORRIS INTERIORS

Recalling the serenity she felt upon seeing the living room for the first time, designer Amy Morris sought to bolster that sense of tranquility with subtle yet striking furnishings that were chosen with the room's architectural features in mind. Sheer curtains soften the edges of floor-to-ceiling windows while still inviting outdoor views into the space. An expansive hand-fluted plaster fireplace may be the star of the room, but the furniture surrounding it is equally commanding. An assemblage of curving lines, sculptural shapes and light and dark finishes infuses the quiet setting with depth, while a large white-and-brass lantern, a Morris design for Avrett, presides over the space. Although the room exudes a relaxed attitude reminiscent of Southern California, a Southern sensibility is evident in Morris' use of antiques, including a pair of walnut chairs and a French 1920s table that add time-honored patina to the otherwise contemporary space. —*Jennifer Boles*

SOFA Dmitry & Co. through R Hughes LANTERN Avrett through R. Hughes HIGHLINE DRINK TABLE Holly Hunt through Jim Thompson LILY GARDEN CHAIR Ainsworth-Noah UPHOLSTERED SKIRTED SLED CHAIR and GREEN VELVET WALNUT CHAIRS Holland MacRae STOOL Kelly Wearstler through Showroom 58 CHAISE LOUNGE UpCountry Home BOOKS B.D. Jeffries

COLORFUL CUES

DEN, ROBERT BROWN, ROBERT BROWN INTERIOR DESIGN
Art—specifically a commissioned set of abstract works on paper by artist Brett Smith—was the starting point for Robert Brown’s design of the den. Mindful of both the strong symmetry of the art installation and the relaxed nature of the home’s architecture, Brown kept the room’s furnishings casual and loose, gravitating to solo pieces of furniture and lamps and avoiding symmetrical pairs. White walls and unadorned windows amplify the room’s brightness, while an earth-toned palette bestows warmth, particularly the Tuscan Red rug from Keivan Woven Arts and a Liaigre plum leather wing chair, a piece which the designer especially admires. Calm and collected, this space lends itself to any number of casual, sophisticated settings, Brown believes, including the Hamptons and even coastal Italy. —*Jennifer Boles*



BRASS VANITY, SINK AND COUNTER and NERO MARQUINA HEARTH Source ART Brett Smith through Sandler Hudson Gallery; Sylvia McEwan through Pryor Fine Art RUG Keivan Woven Arts SOFA, SWIVEL LOUNGE CHAIR, OTTOMAN and TRIPOD FLOOR LAMP Paul+ COCKTAIL TABLE Holland MacRae TUB CHAIR and END TABLE Jerry Pair WING CHAIR R Hughes DESK Ainsworth-Noah BARWARE Townhouse by Robert Brown



CALM AND COLLECTED, THE WARM, EARTH-TONED DEN LENDS ITSELF TO ANY NUMBER OF CASUAL, SOPHISTICATED SETTINGS.



GRACIOUS MODERNISM

FAMILY ROOM AND BREAKFAST ROOM, MELANIE TURNER, MELANIE TURNER INTERIORS

This “glass box” addition—a transparent counterpoint to the massing of the stucco exterior, says architect Linda MacArthur—is partially defined by floor-to-ceiling iron windows and a Venetian plaster ceiling. Decorated by Melanie Turner, the family room features generous upholstered seating that feels cool during the day but cozy at night. Sheer drapery and lightweight linen fabrics uphold the room’s inherent lightness, as does a soft color palette of taupe, blush and pale green. One of the room’s most striking pieces is a painting by America Martin; placed against windows, a moss backing gives it an organic feel when viewed from the outside. The open, inviting atmosphere extends to the adjoining breakfast room, which offers a sophisticated spot to dine amid contemporary furniture and art. Well-suited for leisure and hospitality, the two rooms are “easy on the eyes,” says Turner. —Jennifer Boles

VENETIAN PLASTER and FLOORING Source RUGS Holland & Sherry OTTOMAN Hickory Chair with Schumacher fabric SOFA and COCKTAIL TABLE Bradley USA LOUNGE CHAIR Bjork Studio WOOD SIDE TABLE and PLASTER ACCENT TABLE Noir IRON ACCENT CHAIR Baker DAYBED Douglass Workroom TOTEM POLES Nixcraft LLC, plastered by Artistic Stucco DRAPERY Kravet, fabrication by Willard Pitt Curtain Makers TV EASEL Restoration Hardware ART EASEL Nixcraft LLC ART America Martin through TEW Galleries

**“THE SPACE WAS
DESIGNED TO BE
APPRECIATED IN
JUST ONE VIEW,
AND THE SOFT
TONES TELL YOU
THAT IT’S A PLACE
FOR RELAXING
—JUST LIKE IF
YOU WERE IN
CALIFORNIA.”
—MELANIE
TURNER**



POOL PHOTO BY DAVID CHRISTENSEN

DINING CHAIRS Bradley USA with Schumacher fabric TABLE Karpaty Cabinets PENDANT R Hughes ARTWORK Todd Murphy through Curated Collection and Isabelle Melchoir through TEW Galleries STONE SCULPTURE Noir



DAZZLING DESIGN



DESIGN/BUILD TEAM, BENECKI, LINDA MACARTHUR ARCHITECT, COLE CONSTRUCTION AND SOURCE

“This house is a great example of how working with—and not against—the original spirit of the home can be as inventive as an entirely new build,” says architect Linda MacArthur of Linda MacArthur Architect regarding the Showhouse, which was originally conceived as a Mediterranean-style residence by Harrison Design in the ‘90s.

The design-build team renovated and reimagined the 11,000-square-foot-beauty—which references breezy California style thanks to Venetian plaster walls, imported French oak flooring and hand-

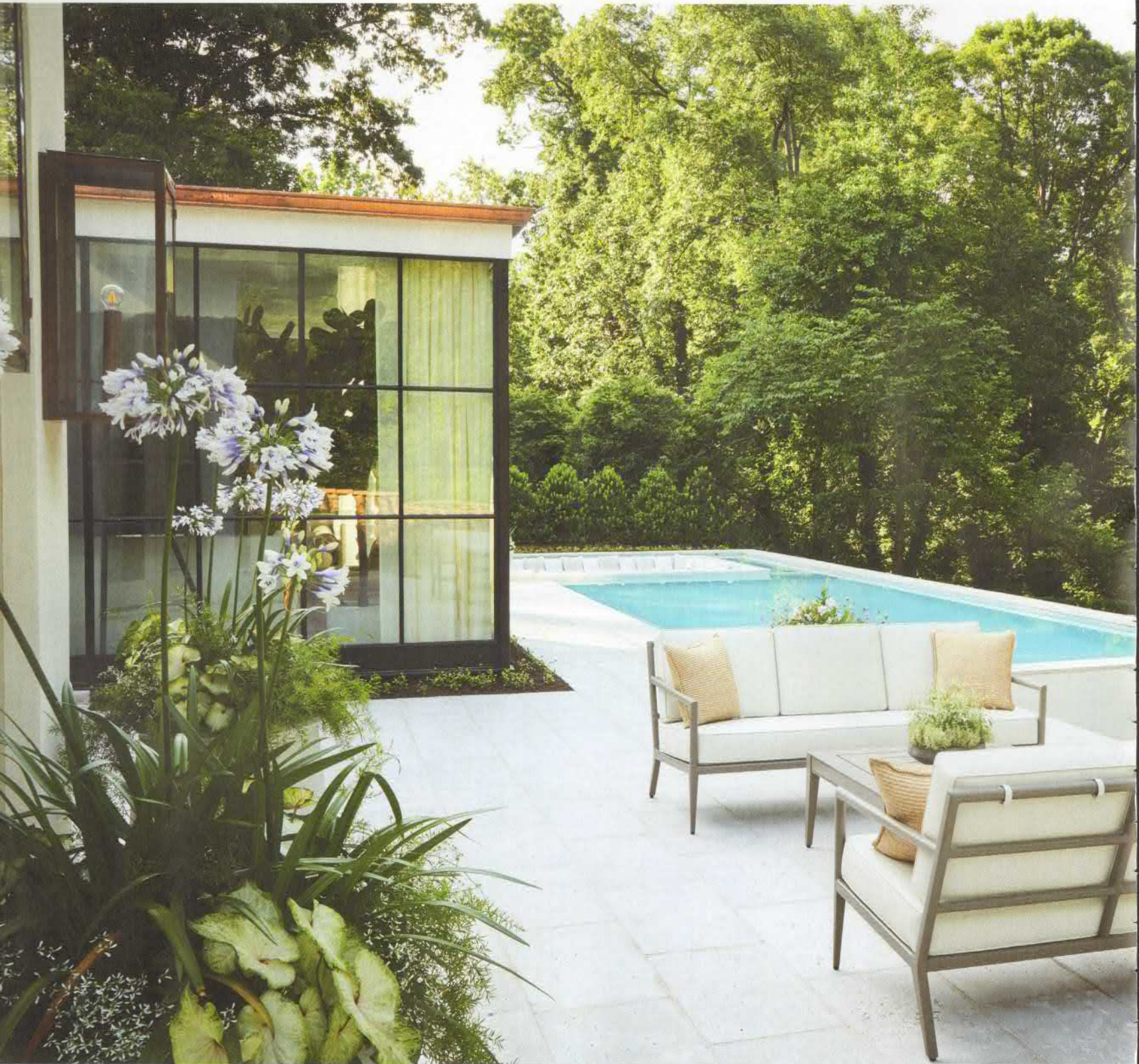
crafted Moroccan tile—to emphasize livable spaces with luxurious detailing as specified by Atlanta-based showroom Source.

A new kitchen with a scullery and walk-in pantry, as well as a laundry and mudroom, contribute to a more cohesive flow for active lifestyles and entertaining, while more formal spaces, such as the living room and salon, maintain a sense of intimacy and simplicity, in keeping with the desired balance of form and function. On the rear façade, the transparent, geometric glass box addition (whose iron windows house a light-filled family room) adds levity to the exterior’s solid massing and overlooks a new terrace, pool and built-in fire pit.

DEVELOPER Benecki
ARCHITECT Linda MacArthur
Architect BUILDER Cole
Construction LANDSCAPE
ARCHITECT LandPlus INTERIOR
SPECIFICATIONS Source
GARAGE Cambek Designer
Doors LANTERNS Bevolo
FURNITURE McKinnon & Harris



AMERICAN IDYLL





LANDSCAPE ARCHITECTURE, KENNETH LEMM & ALEC

MICHAELIDES, LANDPLUS LandPlus sought to bestow this six-acre estate with amenities that might be found in a lavish resort. A handcrafted concrete-paver terrace houses the outdoor pool and its striking sunken fire pit decorated by Source. Tailored combinations of sculptural plantings such as boxwood and a Japanese maple mix well with frothier green and white plants placed in elegant containers. A lush and no-maintenance synthetic turf lawn unfolds beyond the pool towards a canopy of trees for total privacy.



DEVELOPER Benecki
 ARCHITECT Linda MacArthur Architect LAND-
 SCAPE ARCHITECT LandPlus POOL SPA
 DECOR Source LANTERNS Bevolo PAVERS
 Peacock Pavers POOL SPA CONTAINERS Trust
 Stone OUTDOOR FURNITURE McKinnon & Harris
 POOL Habersham Pools



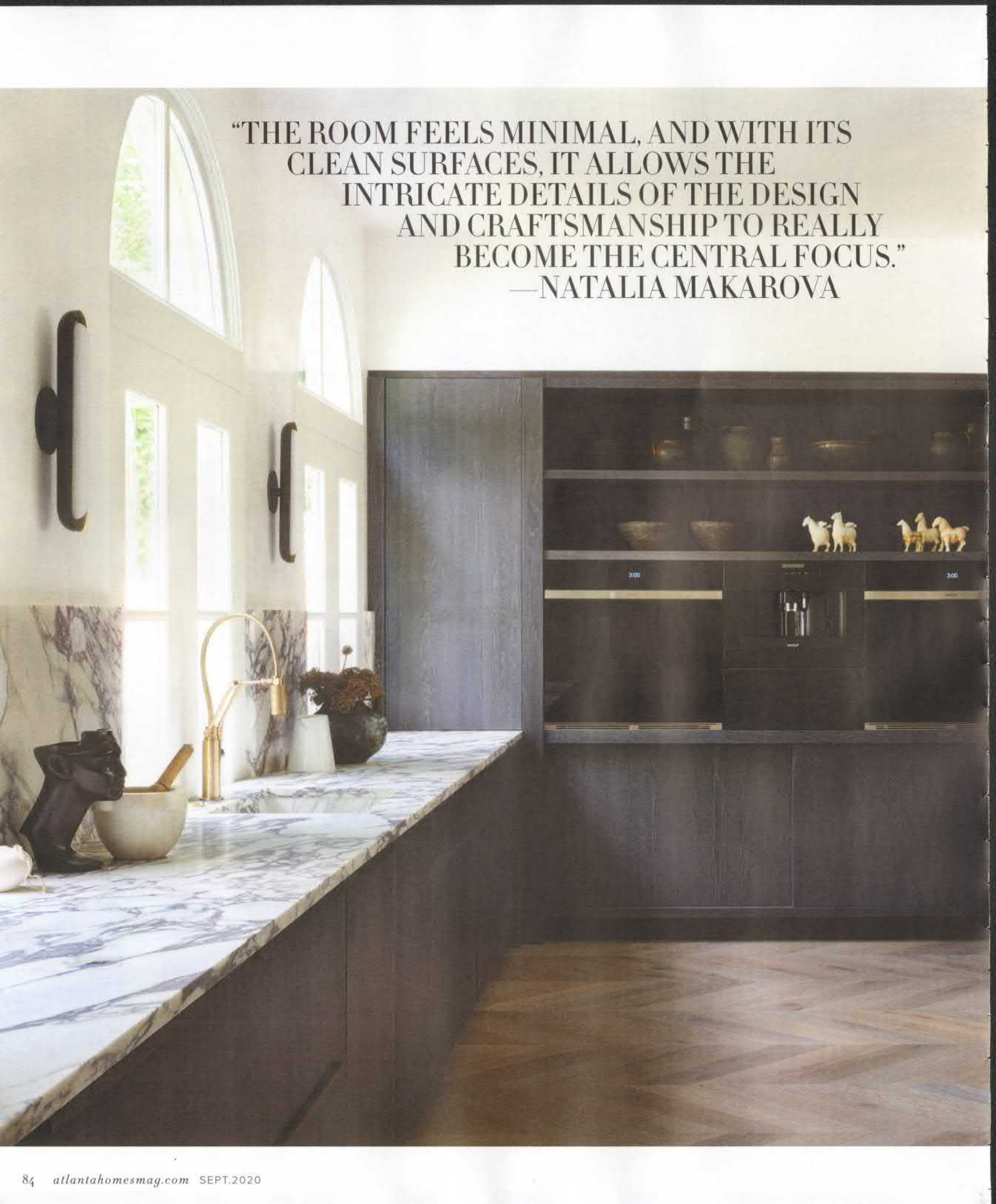


CONTEMPORARY ELEGANCE

KITCHEN, NATALIA MAKAROVA, KARPATY CABINETS

Designed to accommodate both everyday living and entertaining, the kitchen was conceived by designer Natalia Makarova as two fully functional spaces: a main kitchen intended for daily use and a scullery, which offers auxiliary room for cooking, baking and event catering. Linking the two spaces together is a centrally located floating island with a cooktop, which in turn is flanked by glass doors that, when closed, establish a feeling of intimacy on each side without blocking out any natural light. Arched windows allow sunlight to stream in, while sleek cabinetry and richly veined Calacatta Viola Italian marble employed for the countertops, sinks and island shelves create a clean, minimalist environment that allows the kitchen's exquisite textures and superb craftsmanship to stand out. Thoroughly modern in both form and function, this space is rooted in the love of food, family and hospitality. *-Jennifer Boles*

CABINETS Karpaty
Cabinets COUNTER-
TOPS Ciot FLOORING
Source ALL APPLI-
ANCES Sub-Zero Wolf
Cove through Guy
Gunter Home FAUCE-
TRY Brizo SCONCES
Apparatus through R
Hughes STOOLS Nata-
sha Baradaran through
R Hughes

A photograph of a modern kitchen. In the foreground, a long, light-colored marble countertop with dark veining runs across the frame. On the countertop, there is a brass faucet, a mortar and pestle, a dark sculpture of a dog's head, and a vase with dried flowers. The countertop is supported by dark wood cabinetry. In the background, there are dark wood cabinets with open shelves displaying various items, including a small white figurine of a dog and some bowls. The wall features several arched windows with dark frames. The floor is made of light-colored wood in a herringbone pattern.

**“THE ROOM FEELS MINIMAL, AND WITH ITS
CLEAN SURFACES, IT ALLOWS THE
INTRICATE DETAILS OF THE DESIGN
AND CRAFTSMANSHIP TO REALLY
BECOME THE CENTRAL FOCUS.”
—NATALIA MAKAROVA**



Karpaty Cabinets' cabinetry was crafted from white oak and given a custom inky finish, lending the kitchen a sleek, modern verve. The cabinetry conceals a walk-in pantry as well as an upright refrigerator, steam oven and wine cooler. The central island is outfitted with a custom integrated fan shrouded in a smoked glass-and-metal cover.



PHOTOS BY MALIZINA



JOHN POMP STUDIOS
CHANDELIER, PLASTER
SCULPTURE ART, PAS-
CAL PIERME'S *TRANIUR*
16-PIECE SERIES and JIUN
HO CHAIR R Hughes DIN-
ING TABLE and CHAIRS
Bradley USA MIXED ME-
DIA ON CANVAS Susanne
Carmack through B.D.
Jeffries WINDOW TREAT-
MENTS Holland & Sherry



WORLDS AWAY

MASTER BEDROOM, PHOEBE HOWARD, MRS. HOWARD AND MAX & COMPANY

Wishing for a permanent vacation? Designer Phoebe Howard, owner of Mrs. Howard and Max & Company, outfitted the master bedroom with light, island-inspired appointments designed to transport the owners to an exotic locale. Starting with the white plaster bed (a new introduction to the Howard's furniture line, Mr. and Mrs. Howard for Sherrill), Howard layered in soft white linens and breezy draperies along with tropical accents in the form of vintage wicker and bamboo chairs; a teak leaf sculpture above the bed; flat baskets on the wall; and a sisal rug. The sofa's knotted fringe takes its cue from hammocks. Favoring an old-mixed-with-new tension in her designs, Howard added an antique Biedermeier bedside chest and side table in a honeyed finish along with a French walnut chest for a sun-kissed look. The vaulted ceiling is almost ethereal thanks to its smooth Venetian plaster finish and Akari light fixture, while the David Hillegas photograph of dreamy, windswept Balinese sands is a window to another world.

—Cathy McGowin



BED, PHOTOGRAPHY,
LEAF OVER BED, CABINETS
and ACCESSORIES
Mrs. Howard SOFA
M Southern Design Concepts
FABRICS Cowtan
& Tout ROMAN SHADES
Jerry Pair DRAPERIES
The Drapery Room
HURRICANE LANTERN
Ainsworth-Noah



“THE MASTER SUITE IS MEANT TO RELAX YOU AND TAKE YOU AWAY AT THE SAME TIME. I WANTED IT TO HAVE THE LUXURIOUS FEEL OF A FINE HOTEL IN AN EXOTIC LOCATION.” —PHOEBE HOWARD

**“WHEN USING SIMPLE MATERIALS AND
DESIGN ELEMENTS, THE LEVEL IN WHICH THEY
ARE LAID OUT AND INSTALLED IS KEY TO THE
PROPER EXECUTION OF THE CREATIVE VISION.”**

—CYDNEY MITCHELL, SOURCE



NATURAL WONDER

MASTER BATH, CYDNEY MITCHELL AND BRITTANY STAFFORD, SOURCE

Aiming to recreate luxurious spa appointments in five-star style, Cydney Mitchell and Brittany Stafford of Source outfitted the master bath with a chic, West Coast-inspired design. "We wanted to create an atmosphere of relaxation," says Mitchell. "This is a place where someone would feel as if they stepped into a retreat and could escape from the demands of a fast-paced life." To achieve that laid-back California feel, the designers chose calm colorways and focused their attention on bringing nature into the design. "The hand-crafted and hand-glazed terracotta tile from Morocco proved to be the perfect fit, while the dramatic onyx slabs tied it all together," Mitchell says. "The natural elements create texture and introduce organic details throughout the space while highlighting the soft architectural curves of the room." —*Cathy McGowin*



SINK BY DAVID CHRISTENSEN, SHOWER BY MALAZMA

TILE Source ONYX SLABS Ciot VANITY Karpaty Cabinets
FREESTANDING TUB MTI Baths FAUCETS AND SHOWER
SET Brizo LIGHTING Circa Lighting TOILET PDI





STEPPING OUT

CLOSETS, CYDNEY MITCHELL AND BRITTANY STAFFORD, SOURCE

Cydney Mitchell and Brittany Stafford of Source designed two closets, one for each head of household, and the result is worthy of any Rodeo Drive regular. Working with Source's Italian closet vendor, Jesse, the boutique-style rooms offer floor-to-ceiling tinted glass doors, keeping couture in view while built-in drawers, cubbies and shelves maximize organization in style. Decorative accents underscore the elegant finishes. In "her" space, a center table and pair of white stools offers a place to lay out accessories and strap on shoes. In the warm, masculine-leaning closet, the designers introduced a photograph of David Bowie—an inclusion that would make anyone feel like a rockstar. —*Cathy McGowin*



FLOORING Source
CLOSETS Jesse
Italia through
Source LIGHT-
ING Circa Lighting
ART Through Alan
Avery Art Company
WARDROBE Peoples
(her closet) and Miller
Brothers (his closet)

HIS CLOSET PHOTO BY DAVID CHRISTENSEN



NO BOUNDARIES

GUEST ROOM, JARED HUGHES, JARED HUGHES DESIGN

Combining English influences with California imagery, designer Jared Hughes worked with the venerable Gracie Studio to design a hand-painted wall mural that depicts landscapes of Big Sur in a pastoral style. "This is a room for someone who is well traveled and appreciates beauty," says Hughes. "They are fearless when it comes to mixing styles and combining nontraditional designs with classic elements." Working with the studio's artists to capture the West Coast's dramatic cliffs and the Pacific Ocean, Hughes exaggerated scenes and saturated colors for theatrical flair. Upholstery, draperies and linens take a neutral stance to allow the scene to shine. Antiques offer a pleasant tension between clean lines and lavish detailing. Finials on the vintage iron bed reiterate the palms in the mural while wicker lamps and an English bamboo stool impart coastal influences. Grander statements come in the agateware urns on pedestals, gold Louis Philippe mirror and portrait of the English gentleman. —*Cathy McGowin*





Bedroom DAYBED, WINDOW TREATMENTS and PILLOWS Designs by Sudi CANOPY FABRIC Schumacher CUSTOM WALLCOVERING Gracie Studio LOUIS PHILIPPE MIRROR Illuminati Antiques DESK, URNS and PORTRAIT Loft Antiques and Design INLAID ITALIAN TABLE and OIL PAINTINGS William Word Fine Antiques BEDSIDE TABLE LAMPS Custom with Hayden Gregg FLOOR LAMP Circa Lighting LEATHER CHAIR and COFFEE TABLE Travis & Co. SILK FABRIC WINDOW TREATMENTS Cowtan & Tout SOFA, PILLOW and BED FABRICS Décors Barbares through Travis & Co. CHESTS Holland MacRae BED LINENS Gramercy BED SHAMS and DUVET Schweitzer Linen Bathroom MARBLE TILE Source VANITY Karpaty Cabinets COUNTERTOP Clot SCONCE Circa Lighting FAUCET Brizo PAINT Farrow & Ball MIRROR William Word Fine Antiques



**“THE SCHUMACHER WALLPAPER DEFINES THE ROOM AND GIVES IT THAT DRAMATIC DETAIL IT SO DESERVED.”
—BRITTANY CASON JOHNSTON**

DREAM BIG

GIRL'S BEDROOM, BRITTANY CASON JOHNSTON,
BRITTANY CASON INTERIOR DESIGN

Imagining the whims of an artistic young girl who relocated to Atlanta from California, Brittany Cason Johnston gave in to all the spoils in this tween bedroom. Bold colors, playful patterns and fanciful prompts are designed to stimulate creativity. Mixing edgy accents with feminine touches makes this room decidedly individual. "It's a never-ending opportunity for inspiration through patterns and art," says Johnston. The geometric blush pink Schumacher wallpaper harmonizes with the graphic punch of the modern headboard and scalloped canopy on the custom velvet bed. Classic antiques allow glamorous notions such as the Venetian mirror in the bath, vintage gold leaf bedside table lamps and Lucite drapery rods to shine even brighter. A leopard watercolor by Mary Maguire contrasts girly florals and monogrammed linens. With so much stimulation in one room, Johnston thoughtfully carved out studio space in the adjacent closet to capture artistic endeavors when the mood strikes. —Cathy McGowin



RUGS Moattar VENETIAN MIRROR, WALNUT COM-MODE and DECORATIVE PLATES William Word Fine Antiques PAINTED MIRROR and SANTOS FIGURE Loft Antiques and Design ART Mary Maguire through BCID, Whitney Stoddard, Suzy Lindow through Anne Irwin Fine Art CANOPY Schumacher LINENS Peacock Alley Bath FLOOR Source VANITY Karpaty Cabinets COUNTERTOP & TUB SURROUND LG Hausys TOILET PDI





FANTASTIC VOYAGE

BOY'S BEDROOM,
 JOSH PICKERING, PICKERING HOUSE INTERIOR DESIGN

Created for a young man on the go, this bedroom evokes worldly notions of travel and experience. Design considerations included a gentleman's hopes and dreams for exploration, academics and inclusion in social clubs such as the Harvard Club and Knickerbocker Club. "This room is imagined for a college-age student full of aspirations," says designer Josh Pickering. Campaign-style details include the tent-inspired window draperies and canopy on the metal bed. The custom desk and nightstand play into the theme thanks to details such as inset finger pulls, brass trimmings and tooled leather handles reminiscent of those on a vintage suitcase. Global influences include the Georgian column, Egyptian obelisks and the Bolga basket dog bed, handwoven in Africa. The tole agave planter lends a touch of Latin America. The Klismos desk chair recalls travels to Greece, and the hand-painted lampshades have motifs taken from Villa Kerylos.

—Cathy McGowin



DESK, BEDSIDE TABLE,
HAND-PAINTED LAMP-
SHADES Pickering House
BEDSIDE TABLE LAMPS
and SCONCES Circa Light-
ing CANOPY and CUR-
TAINS FABRICS Pindler
Fabrics BEDDING E. Braun
& Co. SETTEE Vervain
fabric with Samuel & Sons
appliqué trim through
Ainsworth-Noah KLISMOS
CHAIR Tara Shaw TOLE
PLANTER WITH AGAVE
Chelsea House RUG Stark
Carpets







TOP PHOTO BY DAVID CHRISTENSEN



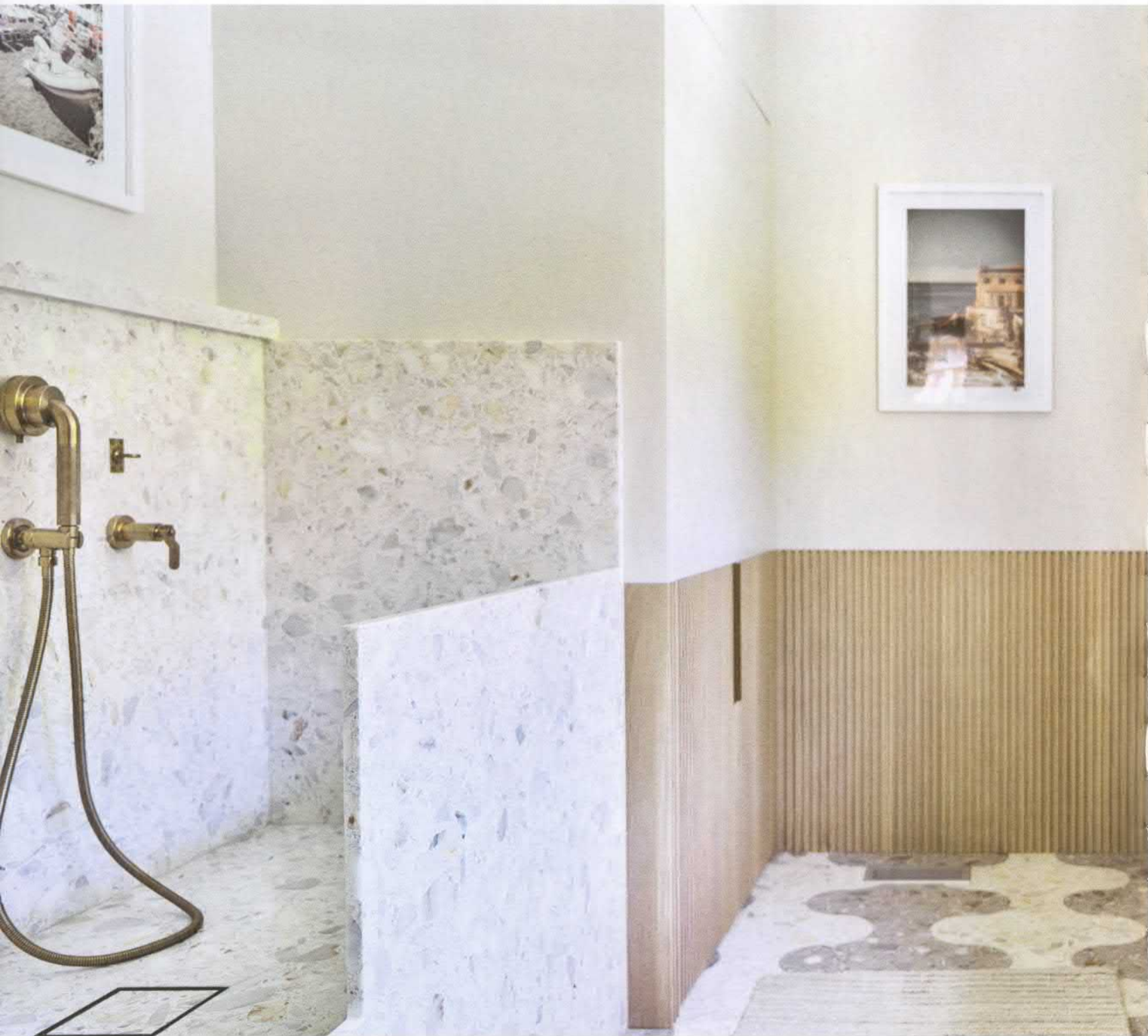
UP AND AWAY

LOFT, KATI HARDWICK, B.D. JEFFRIES

The upstairs loft seems even cozier thanks to the sloping ceiling, but it also presented a challenge for Kati Hardwick, the in-house designer for B.D. Jeffries. “The space was previously the chef’s apartment, a pied-à-terre, if you will,” says Hardwick. To counteract the room’s low ceiling height, Hardwick focused her attention on centralizing the main functioning areas with two facing sofas. Floating furnishings to the center of the room, says Hardwick, prevents guests from bumping into the angled ceiling. Aiming for an upstairs retreat that would suit all ages, the room offers a game table, reading nooks and the sofas for lounging. Light was also a consideration, so Hardwick opted for neutral fabrics. “Right now I’m crazy for textured fabrics. I used a bouclé for the sofas and a fringed fabric for the drapery. I think when adding texture to something so neutral, it gives the piece a personality of its own.” —Cathy McGowin



ALL FIXTURES AND FURNISHINGS B.D. Jeffries
Bathroom
 TILE Source VANITY Karpaty Cabinets
 COUNTERTOP Ciot FAUCET AND TUB SET Brizo LIGHTING Circa Lighting



“THE SOUTHERN CALIFORNIAN MOOD HAS A LITTLE ATTITUDE, WHICH WE PULLED THROUGH IN THE VESTIBULE WITH THE GRAPHIC STREET ART PRINTS ON THE WALLS.” —TARA DENNIS

WITH VERVE

OFFICE/INFORMAL POWDER ROOM/MUDROOM/LAUNDRY ROOM, TARA DENNIS, ARCHIE BOLDEN AND SOURCE

Rather than treating four connected service rooms—which are connected to the garage, the pool terrace and kitchen—in unilateral fashion, designer Tara Dennis instead gave each space its own distinctive personality. Taking its cue from black-and-white street photography, the vestibule office maintains a bold, graphic mood. Next door, the pink-hued powder room assumes a romantic posture, which was inspired by a vintage oil painting and a pair of vintage candlesticks. In the mudroom and laundry room, Dennis added organic materials such as seagrass and earthy colors as a natural complement to the rooms' terrazzo floor tile, fluted wood cabinetry with quartz countertop and a honed terrazzo dog wash, all specified by Source. Together, the functional but stylish rooms project an attitude that is fresh and free-spirited. —Jennifer Boles



DOG WASH PHOTO BY DAVID CHRISTENSEN



TERRAZZO TILE & WOOD
FLOORING Source
CABINETRY Karpaty
Cabinets QUARTZ
COUNTERTOP LG
Hausys FAUCETS Brizo
SCONCE Circa Lighting
PHOTOGRAPHY Alex Sa-
vidis OFFICE CHAIR Made
Goods PAINT Palermo
Rose by Benjamin Moore





ALL FIXTURES AND
FURNISHINGS Boxwoods
Gardens & Gifts



LOUNGE ACT

POOL LOUNGE, RANDY KORANDO AND DAN BELMAN, BOXWOODS GARDENS & GIFTS

Located adjacent to the home's indoor lap pool, the pool lounge is a bright, comfortable space to relax in and enjoy a glass of iced tea or, better yet, a mint julep, say the room's designers Dan Belman and Randy Korando. A round cast stone table anchors the light-filled space, while upholstered seating tempts swimmers to take a break with generous cushions and lightweight fabric in soothing neutral shades. Should a nap be needed, the designers included a sleeper sofa from Gabby, which does double-duty as a bed. The most inspired decoration, however, might be the framed shadow box collection of vintage bathing caps, which are displayed above the room's French doors. A nod to the room's poolside location, the assemblage was also inspired by old Hollywood movies and their bathing beauties. —*Jennifer Boles*

PHOTO BY DAVID CHRISTENSEN



MELANIE MILLNER USED CAST URNS FILLED WITH MOSS TO BRING THE OUTDOORS IN. AT NIGHT, THE HURRICANE LANTERNS TURN THE ROOM INTO AN ENCHANTING GROTTO.



ENDLESS SUMMER

INDOOR POOL, MELANIE MILLNER, THE DESIGN ATELIER

Winter may not be Atlanta's favorite season, but thanks to the home's indoor lap pool and designer Melanie Millner's idea to turn it into a hidden oasis, the illusion of warm, sunny days can be found year-round. Whether used by a serious swimmer, or just someone looking for a place to relax, this pool room brings to mind swaying palm trees and sandy beaches thanks to the handwoven hammocks suspended over the water. Sourced from weavers in the remote Bolivian Amazon, each hammock represents a month's work by women in the village. Exquisitely detailed in the weaving, braids and crocheted fringe, the hammocks are not only works of art, but a traditionally lovely way to nap. —Cathy McGowin



HAMMOCKS L'aviva
Home PLANTERS,
BENCHES, ORBS, LARGE
ESTATE PLINTH, URNS
and SQUARE ESTATE
PEDESTAL Elegant Earth
HURRICANE LANTERNS
Formations at Jerry Pair
opposite LANDSCAPE AR-
CHITECTURE LandPlus

GLITZY GETAWAY



HOSPITALITY LOUNGE, TOPOGRAPHY HOME AND CARACOLE HOME FURNISHINGS

Describing the hospitality lounge as “coastal glam,” the designers of Topography Home set out to give the space the feel of the beach while also introducing a bit of sparkle. A soft cream palette accented with shades of sea-foam conjures coastal images, as do coral-like lamps and a set of abstract paintings reminiscent of sand ripples. Commanding attention, a curving sectional from Caracole is a conversation starter, literally, as the designers envisioned it as a spot for chitchat. Rounding out the glittering mix are a pair of brass with enamel inlay chairs and an acrylic table, whose high-style presence is kept in check thanks to a lighthearted shag carpet. — *Jennifer Boles*

FURNITURE Caracole
Home Furnishings DECOR
Topography Home

PHOTO BY DAVID CHRISTENSEN



SPECIAL THANKS

PRESENTING SPONSOR AND DEVELOPER **BENECKI** beneckihomes.com

DIAMOND SPONSOR **HARRY NORMAN** harrynorman.com

GOLD SPONSORS **ADAC** adacatlanta.com • **AMERICASMART** americasmart.com

CAMBEK DESIGNER DOORS cambek.com • **CIOT** ciot.com • **FRONTGATE** frontgate.com

GUY GUNTER HOME guygunterhome.com • **KARPATY CABINETS** karpatycabinets.com • **LANDPLUS** landplusassociates.com

LG HAUSYS lghausysusa.com • **LINDA MACARTHUR ARCHITECT** lindamacarthurarchitect.com

SOURCE sourceatl.com • **SUBZERO WOLF AND COVE** subzero-wolf.com

SILVER SPONSORS **BEVELO** bevolo.com • **BOXWOODS GARDENS & GIFTS** boxwoodsonline.com • **INSIDESIGN** myinsidesign.com

JAIPUR jaipurliving.com • **MTI BATHS** mtibaths.com • **REV-A-SHELF** rev-a-shelf.com

HOSPITALITY SPONSOR **CARACOLE** caracole.com • **TOPOGRAPHY HOME** topographyhome.com

HOTEL SPONSOR **WALDORF ASTORIA** waldorfastoriaatlanta.com

For more showhouse images, visit atlantahomesmag.com/article/californiacool

MOONLIGHT & MAGNOLIAS



The best in the design-industry gathered to enjoyed the opening of *Atlanta Homes & Lifestyles'* FIFTH-ANNUAL SOUTHEASTERN DESIGNER SHOWHOUSE. Fifteen interior-design firms from across the Southeast put their signature stamp on a historic estate located in the heart of Buckhead. The event, presented by Benecki and benefitting Atlanta History Center, honored celebrated Atlanta interior designer Melanie Turner of Melanie Turner Interiors. PHOTOGRAPHY BY DREW WILLS PHOTOGRAPHY FOR BUSINESS OF HOME

1. Melanie Turner Interiors design team, from left: Melanie Turner, Cristi Rejevac, Hanalee Lowry, Katie Runyan, Karen Gardner, Maggie Bryne, Paige Prettyman, Natasha Jones
2. Don DeLong, Rob Zueich and Lisa Connor of SubZero-Wolf Cove 3. Alec Michaelides, Charlie Sears and Chris Holden of Land Plus Associates 4. The team from Linda MacArthur Architect 5. Mary Coley McMillan, Brittany Stafford and Stefanie Meyer of Source 6. Stan Benecki and Vern Vanderkleed of Benecki Homes