

THE

MODERN LUXURY

# ATLANTA



Introducing...  
**INTERIORS ATLANTA**  
SPOTLIGHTING MODERN  
SOUTHERN DECOR

## THE TRAVEL ISSUE

*The Luxe and Latest Guide to the Slopes*

EPICUREAN DELIGHTS, ISLAND-STYLE  
BEST NEW HOTELS FROM NYC TO VEGAS

*Plus*

MODA'S EBONY FASHION FAIR RETROSPECTIVE  
THE LUMINARY'S CULINARY WATTAGE  
STARGAZING! ANDI DORFMAN, ANNIE POTTS, EGYPT SHERROD AND MORE

BY THE PUBLISHERS OF *THE ATLANTAN MAGAZINE*

MODERN LUXURY

# Interiors

ATLANTA

## SOUTHERN STYLE

*The Premiere Issue*

WHAT'S NOW  
AND NEXT IN  
ATLANTA DESIGN

A MODERN MASTERPIECE IN SANDY SPRINGS

AN ENGLISH ESTATE IN TUXEDO PARK

SNEAK PEEK: NANCY BRAITHWAITE'S FIRST BOOK

CHECKING IN WITH TERI DUFFY, STEVE MCKENZIE AND STAN TOPOL

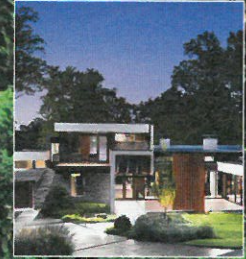
DECOR GALORE! CROCODILE, RUNWAY-INSPIRED AND  
FAIRY TALE FINDS TRENDING NOW!

# CONTENTS FEATURES

## FEATURES

**MODEL HOME** 48 CEO of the CMT Agency, Shelly Justice takes us inside her modern manse designed by Atlanta-based firm, Dencity LLC.

**ENGLISH MANNER** 64 William T. Baker and Suzanne Kasler collaborate to give a beautiful Buckhead home an English estate aesthetic.



## ON THE COVER

PHOTOGRAPHY: Galina Coadu for Fotorep, CMT Agency  
DESIGN: The modern Sandy Springs manse was designed by Staffan Svenson of contemporary architectural firm, Dencity LLC.

64



ESTATE OF GRACE

From left: Leuders Texas limestone covers the facade, while Bevalo lanterns frame the front door, which is steel inserted in a large radius arch; in the upstairs master bedroom a vintage brass and mirror coffee table by Belvedere is paired with a Belaire curbed French settee and Hedy Mongolian lamb throw blanket both from Mecox Gardens and pillowcase by Leontine Linens.



# English Manner

Together, residential designer William T. Baker and interior-design doyenne Suzanne Kasler craft a Tuxedo Park estate with a unified message.

By Stephanie Davis Smith  
Photography by Erica George Dines

For a busy Atlanta entrepreneur, his wife and three kids—who all spend their days navigating jam-packed schedules—it's little wonder that their 17,000-square-foot home must function equally as a place of respite and entertaining everyone from venture capitalists to rowdy school kids. With an enviable lot on one of the most desirable streets in Buckhead, the owner called on local residential designer William T. Baker, who was recommended by interior maven Suzanne Kasler and builder Stan Benecki of Benecki Custom Homes, to create just that: a very private retreat that can also host a hundred.

Behind a somewhat intimidating English state-home facade

“THEY ARE A YOUNG FAMILY WHO WANTED A HOUSE WITH CLASSIC ELEMENTS THAT WASN’T SO TRADITIONAL,” KASLER DISCLOSES.



**LUXURY RETREAT**  
From left: Atlanta-based interior designer Suzanne Kasler; an oval tray by James Dixon from Parc Monceau sits on the sleek downstairs bar.



high on a hill sits an open and airy home imbued with loads of light. “My favorite part of the house is the entry door, which is steel inserted into a large radius arch. That, and the floor plan is amazing because when you come in the front door you don’t immediately see the grand staircase,” Baker reveals of the estate he imagined in the historical English Arts and Crafts Movement style. “The staircase is in its own space to the right of the door with a huge two-story bay window through which light floods into the house. As the staircase turns and goes upward, the entire front wall is glass. It’s stunning!”

The effect is signature Baker. “When I design a house, I always make sure that the connection between the outdoor and indoor is strong,” confesses the residential master, “and this is a perfect example of

that.” Once you enter the bowed front door and cross the herringbone limestone floor in the foyer, you can look clear through the living room out onto the pool. “The house is L-shaped,” notes Kasler. “It all wraps around the pool and pool house in the back.” The pool house’s five-fold, 18-foot glass doors completely open up to an outdoor living space with an enchanting oversize outdoor fireplace, exemplar of the English Arts and Crafts Movement. The effect makes a strong statement about how committed the owners are to indoor-outdoor living.

With that being said, the clients were extremely involved in the design process. “You may think otherwise, but the houses where the owners are involved tend to come out better,” reveals Baker. “It was a good collaboration, and we

CONTINUED...

CONTINUED...



**SMOKE SIGNALS**  
The pool house acts almost like a pavilion with its 18-foot ceilings and opens up on one side to the pool and on the other side to an outdoor entertaining space. Leuders Texas limestone on this fireplace matches the outside of the home. The spectacular structure is also indicative of the English Arts and Crafts Movement.

...CONTINUED

**WARM WELCOME**

From left: Pewter gray oasis lamps from B.D. Jeffries on the sidetable, cone fixtures from the Huniford Collection at Dwellings, slipcovered Campaign bar stools by McAlpine Home Collection picked up at South of Market Wolf range, and Rohl sink fittings; Continental tole lamp and American globe by Parc Monceau, 18th century Italian writing table sourced from Interiors Market.



...CONTINUED ended up with a house that was the aesthetic that they wanted.”

When it came to the interiors, the owners were equally as enmeshed and wanted a warm contemporary look. As with many of his previous projects, Baker worked closely with Kasler, who devised interiors to complement his exteriors. “We have a very long-lived relationship working together, going back 20 years,” explains Baker. “The beauty of that is that we have very good rapport and communicate well with one another and are not afraid to hold back ideas or free thoughts as we work together on a house.”

Kasler felt free to deviate from the historical style of the house when it came to interiors. The mix of sophisticated modern furnishings is what keeps it so fresh, young and interesting. It’s a house for today, anchored in the past. “They are a young family and ...CONTINUED





...CONTINUED

**STRONG FEATURES**  
In one of two living rooms in the house, Kasler installed a Duvieux chandelier by Dessin Fournir; Natura Sisal rug by Stark; an English high-back chair and Cap Ferrat cocktail table, both from Dennis & Leen; artwork by Raphaelle Goethals from Bill Lowe Gallery; Atherton sofa by Nancy Corzine; small Morris lantern by Circa Lighting; and Swedish Campaign chairs by Lief.



CONTINUED...

#### LIGHT THE WAY

From top: In the daughter's bedroom sits a dressing table from Brocade Home, a black-and-white Bradley Hughes fabric incorporates pops of pink, and a whimsical arched alcove is big enough to accommodate an extra bed; Baker designed this two-story hallway to flood the home with natural light.



CONTINUED...wanted a house with classic elements that wasn't so traditional," Kasler discloses. To accomplish that, the clients even traveled to Los Angeles with the interior designer to source special pieces. "I love to shop in L.A. because they have that American way of living both indoors and out down pat. [Californians] also mix rustic with dressy so well and I wanted my clients to see that," says Kasler. "We sourced some fantastic one-of-a-kind pieces there for their home."

To entertain the lively family and their friends, Kasler actualized interiors with a modern take on traditional design that would look elegant but still handle some wear and tear. Sturdy Sisal carpeting and hardy oak paneling mix with crystal chandeliers, rich upholstery and exquisite high-back chairs. Kasler kept the furnishings clean-lined and neutral with a blend of custom designs—from antique pieces like an 18th century Italian writing table from

Interiors Market, to contemporary pieces such as the slipcovered Campaign bar stools by McAlpine Home Collection.

And to accentuate a double-height living room, Baker and Kasler employed subtle tricks to add visual interest and the sense of warmth the clients were seeking. A Duveaux chandelier by Dessin Fournir exudes a grandeur that matches the vaulted ceilings, while above, reclaimed, antique, hand-hewn timbers balance any austerity with a feeling of coziness. "This living room is my favorite one in the house," confesses Kasler. "Here, we were able to get a lot more details in the design: It's a beautiful mix of linens and velvet sofas with drapery and more contemporary pieces."

Upstairs, Kasler continued the blend of vintage furnishings and contemporary pieces in the client's daughter's bedroom, adding Middle-Eastern Moorish architecture over a bed to reinforce the ...CONTINUED



**SLEEP BRIGHT**

In the master bedroom upstairs, the headboard is custom-made with platinum velvet from J. Robert Scott in the same color as the silk curtains. The bed linens were custom-made by Leontine Linens. The Percival chandelier is from Kasler's collection for Visual Comfort, and was modeled after a French original.

CONTINUED...home's Zen sensibility. She also intensified the bedroom's palette with a black-and-white pattern and restful shades of pink.

While that respite has some spunk, her favorite bedroom in the home, by far, is the master. "I love the scale of things in this room and the unique barn ceiling," exclaims Kasler. "It's tailored and clean with a custom velvet headboard by J. Robert Scott, but at the same time we layered enough texture in the decor to add some interest." Furthermore, she seamlessly melded the master's interiors with the window views of the sprawling lawn

designed by Lance West Associates

Recently, the client reluctantly had to put the home on the market, and it's now listed with Stephanie Lewis at Atlanta Fine Homes Sotheby's International Realty (atlantafinehomes.com). "It is one of the most spectacular homes I've ever seen," says the high-end realtor.

And though during the day this quiet sanctuary focuses on the beauty of bringing the outside in, when night falls and one of the home's seven fireplaces is lit ablaze—it's the interior landscape that really is something to see. Lewis is right—it *is* spectacular. ■

---

**DESIGN DETAILS**

TYPE  
**Single-family**

LOCATION  
**Tuxedo Park**

RESIDENTIAL DESIGN  
**William T. Baker**  
wtbaker.com

DESIGNER  
**Suzanne Kasler**  
suzannekasler.com

VENDORS  
**Belvedere**  
A vintage brass and mirror coffee table in master bedroom

**B.D. Jeffries**  
Pewter gray oasis lamps in kitchen

**Circa Lighting**  
Small Morris lantern in living room

**Dennis & Leen**  
English high-back chair and Cap Ferrat cocktail table in living room

**Dwellings**  
Cone fixture from the Huniford Collection in kitchen

**Interiors Market**  
18th century Italian writing table in the hallway

**Leuders**  
Texas limestone used on exterior and outdoor fireplaces

**Lief**  
Swedish Campaign chairs in living room

**Mecox Gardens**  
Belaire curbed French settee and Hedy Mongolian lamb throw blanket

**Parc Monceau**  
Continental tole lamp and American globe in hallway, and oval tray by James Dixon on the bar

**Raphaëlle Goethals**  
Artwork in living room

---